



SURVEILLANCE AUTOMATION SYSTEM

> HD Ready > Tapeless > Scalable > Cost-effective

HD CAPABLE, TAPELESS ENVIRONMENT

SURVEILLANCE AUTOMATION SYSTEM
 SentryCore™ is a software-based solution designed by surveillance and broadcasters to provide a fully automated video delivery system upgrade to your current operation allowing you to broadcast targeted material to local or remote viewing systems. Send controllable video programming anywhere.
 SentryCore can offer your client live programming in lobby's, elevators, hallways, parking lots, and even moving vehicles and cell phones. Turn your central control system in to a live information system with real-time news, programming, commercials and emergency broadcasting messages.

How can simplicity equal productivity?

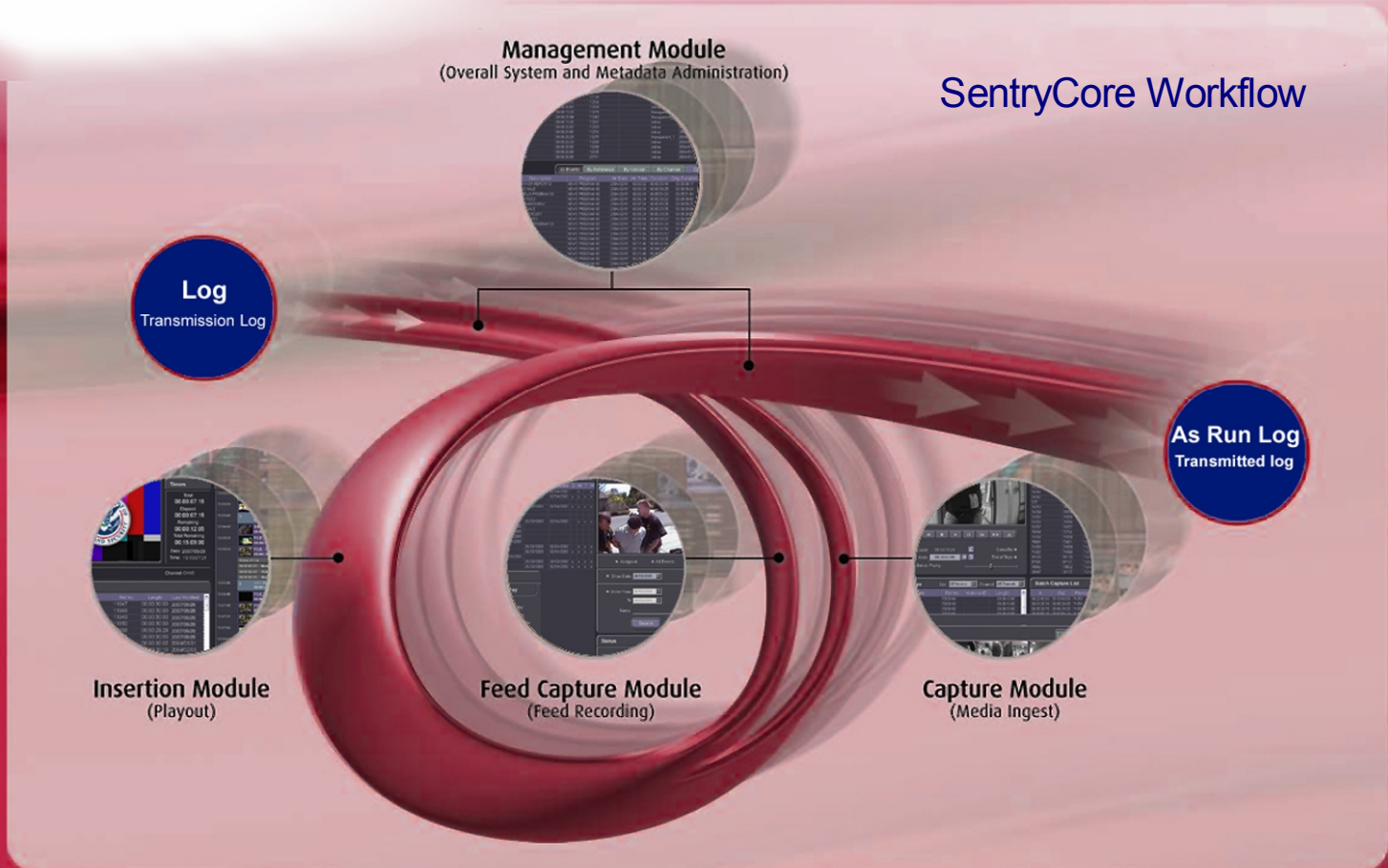
Forget about high priced, complex and incompatible systems. SOLID WITNESS SentryCore's highly cost effective modular design helps you simplify and improve your existing work flow. Management control, unlimited expandability and the confidence of a frame accurate consistent transmission will no longer be out of reach.

GENERAL FEATURES

- Fully integrated software-based Broadcast Automation System
- Multiple 3rd party traffic systems supported (log/as-run log)
- Adaptable to custom-developed traffic systems (log/as-run log)
- Advanced multi-channel media management tools
- Highly customizable transmission reports
- Modular design for optimal system integration
- Skin-based intuitive graphic user interface
- Latest network architectures supported
- Customizable data display and format
- Unicode multilanguage support
- Inter-user messaging
- Privilege-based user access
- Frame accurate control for multiple external devices
- Built-in video overlays and audio UV meters
- Extensive database search capabilities
- Scheduled content recording
- Closed Caption/VBI supported
- On the fly digitized content segmentation
- SAN, NAS, DAS and/or internal storage supported
- UNIX-based DB server
- Up to four simultaneous output channels per playout module
- Up to two simultaneous input channels per playout module
- Up to two simultaneous capture channels per ingest module.
- Master/Genlockable video time base supported.
- Transcoding from common broadcast codecs
- Multiple storage handling, for managing media in different storage sites

TECHNICAL SPECIFICATIONS

- Video Inputs and Outputs Supported:
 Analog: Component, S-Video and Composite
 Digital: SDI and IEEE-1394
- Audio Inputs and Outputs Supported:
 Analog: XLR balanced and unbalanced
- Digital: AES/EBU, SDI-embedded and IEEE-1394
- Standard SD Formats Supported:
 NTSC, NTSC-J and PAL formats supported (525/625 at 29.97/25 fps)
- Standard HD Formats Supported:
 1080i at 25, 29.97 and 30fps
 720p at 23.98, 24, 50 and 59.94 fps
 1080p/PsF at 23.98, 24, 25, 29.97 and 30 fps
- Software Codecs Supported:
 Standard Definition:
 DV, DVCAM, DVCPRO and DVCPRO50
 D 10 (in an MXF file wrapper)
 MPEG-2 I-frame
 MPEG-2 IBP
 YUV 4:2:2 8-bit uncompressed
 YUV 4:2:2 10-bit uncompressed
- High Definition:
 MPEG-2 I-frame
 MPEG-2 IBP
 YUV 4:2:2 8-bit uncompressed
 YUV 4:2:2 10-bit uncompressed



Make Work Flow



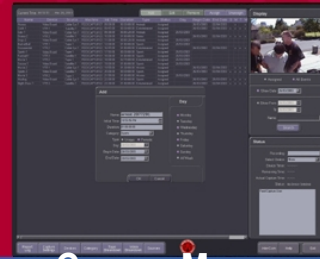
INSERTION MODULE

- ▶ Automate your Master Control room from Fission's playout module
- ▶ Load or edit playlists generated in the management module, to make last minute changes on this frame accurate environment
- ▶ Playout/Monitor up to four channels from a single Insertion module
- ▶ Embed commands for bidirectional GPI triggering and external device control (VTRs, routing, console switchers)
- ▶ Seamlessly compose or sequence CG/graphics, video or live content from digitally stored material
- ▶ Create templates for commonly used routines
- ▶ Trigger events by GPI or time-based sessions
- ▶ Intuitive and user-friendly graphic interface for easy media search and access.
- ▶ Easily reschedule events on the fly
- ▶ Use trim editing tools to adjust media length even while On Air
- ▶ Access media from local or external storage



MANAGEMENT MODULE

- ▶ The starting point of Fission's workflow. This multi-channel module controls all content and profile information, transmission reports, media and user management operations.
- ▶ Import log files from a 3rd party traffic system or add content directly into the database. The metadata becomes instantly available to all other Fission modules.
- ▶ Create and edit playlist automation even days before transmission
- ▶ Add external device commands, verbal advertisement marks, overlay graphics, and video compositing to playlists
- ▶ Provides tools for media distribution to create a mirror server or simply update the daily content from one storage site into another
- ▶ Integrate media from different departments or sources into the system
- ▶ Generate detailed transmission reports
- ▶ Export as run logs to the traffic system of choice



CAPTURE MODULE

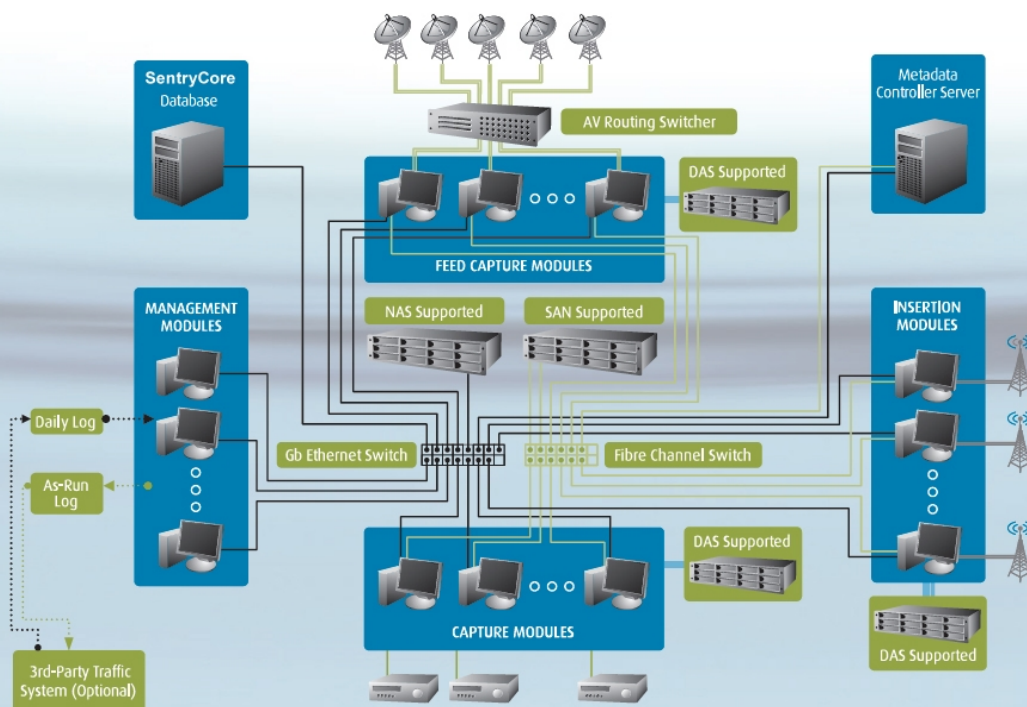
- ▶ Link newly captured media with its pre-existing metadata profile in Fission's main ingest module
- ▶ Automatically cue the capture tasks needed to complete the material for transmission based on daily logs
- ▶ Automate the entire ingest process with accurate batch capture lists
- ▶ Trim stored media or last minute manual captures with handy built-in NLE tools
- ▶ Designed for tapeless as well as tape-based environments
- ▶ Control multiple devices to capture from several sources; up to two simultaneous inputs
- ▶ Import or create user bit-based tape catalogs
- ▶ Keep detailed operation logs for future reports



FEED CAPTURE MODULE

- ▶ The basis of Fission's tapeless operation
- ▶ Automate prescheduled, unique or periodic extended media captures
- ▶ Define program or movie segments with built-in time code breakdown tools
- ▶ Supports playback of files that are still being recorded
- ▶ Multiple time delay playback for deferred transmissions
- ▶ Built-in transcoding tools
- ▶ Capture from external devices such as tape recorders and routing switchers
- ▶ Every event added becomes available to all other stations for assignment
- ▶ Keep thorough logs of file captures and tape recording activities for future reports

SentryCore Connectivity



Solid Witness LLC
 7 Marguerite Lane
 Towaco New Jersey Tel: (973) 265-4007
 Fax: (973)299-0257
 sales@solidwitness.com

Solid Witness IVS wholly owned subsidiary of Solid Witness LLC.
 Main Office
 Bethel Connecticut
 PHONE 1-203-948-4098
 Fax 1-973-265-4007
 salesIVS@solidwitness.com

Solid Witness MGS wholly owned subsidiary of Solid Witness LLC.
 TOMS RIVER, NJ 07082
 PHONE 1-732-575-6474
 Fax 1-973-265-4007

Solid Witness Aisa
 19/F Beverly House
 93-107 Lockhart Road
 Hong Kong
 Tel: (T)+852 2891-1444
 (F)+852 2891-1466 (M)+852 9849-6324
 (China)+86 1367-120-3825
 salesap@solidwitness.com